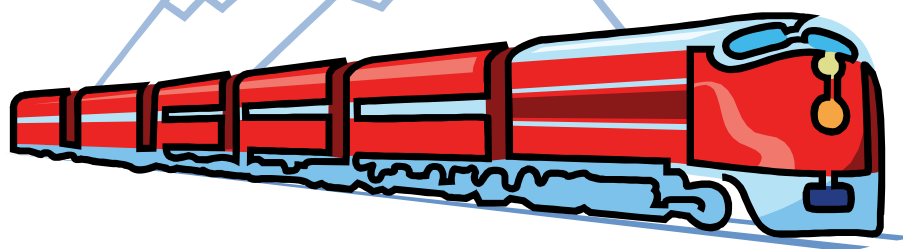
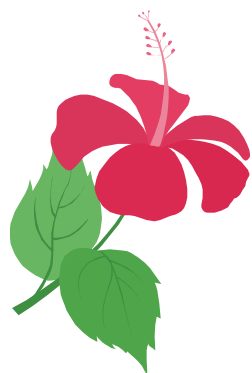


HANOVER EXPRESS



A Publication of:
**HANOVER GROVE
COOPERATIVE**

MOVING FORWARD

August 2011

Inside This Issue

Management News	2,3,4
Member News	5,6,7
Movie Night	5
Red/Pink Hats	5
Recipes	8
Word Search	9
Happy Ads	10
Hall Rental	11
Calendar	12



MARK YOUR CALENDARS
Yard Sale Saturday & Sunday
September 17th & 18th
Garbage Bag distribution
Friday & Saturday
September 9th & 10th

**NO OPEN BOARD
MEETING
IN
AUGUST
ENJOY YOUR
SUMMER!**



**MMAM INSPECTIONS
FRIDAY, AUGUST 19, 2011**

See page 2 for details



RECERTIFICATION UPDATE

See page 4 for details



**WHO'S WHO IN
HANOVER GROVE**

BOARD OF DIRECTORS

Gary Niedojadlo, President
gussy526@yahoo.com
Marilyn Storms, 1st VP
stormymarilyn@yahoo.com
Jo Ann Poznanski, 2nd VP
jpoz@wowway.com
Bernice Behrend, Secretary
Pat Kempf, Treasurer
patk@wowway.com

COMMITTEES & CHAIRPERSONS

Membership/Orientation

Carole Pranter

NEWSLETTER

Dorothy Colflesh
sales@hanovergrove.com

**SENIORS - MOVIE NIGHT /
RED HATS**

Bernice Behrend

HALL RENTAL (586) 296-5464

Debbie Niedojadlo
hallrental@hanovergrove.com
Monday 5 pm - 7:30 pm
Saturday 10 am - 1 pm

MANAGEMENT OFFICE

(586) 293-5150

- > Charles E. Valdez
*President-Marrs Management &
Realty, Inc.*
- > Sandra L. Puma
Property Manager
- > Veronica Kitrys
Recertification Director
- > Melinda Williams
Recertification Assistant
- > Dorothy Colflesh
Sales/Administrative Assistant
- > Rochelle Bresnahan
Front Desk

MAINTENANCE DEPARMENT

(586) 294-1910

- > Roy Malone
Maintenance Supervisor
- > Sandy Sandusky
Maintenance Coordinator
- > **Maintenance Staff**
Rich Bossen
Brad Mogge
Mark Rhodes
Troy Folgman
Bob Mullins
Bob Dillon
- > **Grounds & Part Time**
Brendan Fraser
Josh Malone
Jason Sutherland

MANAGEMENT NEWS

TO: ALL RESIDENTS OF HANOVER GROVE
FROM: SANDRA L. PUMA
DATE: August 1, 2011
RE: MMAM INSPECTION

Dear Members:

Please be advised that on Friday, August 19, 2011, Michigan Multi Family Asset Mangers (MMAM) will be on site at Hanover Grove Cooperative to perform **unit file inspections** as well as **physical inspections of selected units.**

The inspector will also perform a walk-thru of units that are selected at random on the day of the inspection. Also inspected are the grounds, common areas, the maintenance work areas and the management offices.

Since we do not know until the day of the inspection which units will be selected, all residents need to be prepared for the inspection. Members do not need to be present during this inspection. The inspector along with our Maintenance Supervisor will be entering the selected units.

Please be prepared for this inspection and call in a work order for any items in your unit that you feel are a hazard or safety issue.

Any member who has their own locks and keys must make sure the Management Office has a copy of their key. If your unit is selected and we are unable to gain access to your unit, you will be assessed a \$50.00 fine.

In order for the Cooperative to pass this inspection, we all need to work together to make sure that our units and the grounds are in tip top shape for this inspection. Your cooperation is greatly appreciated. Let's continue to make Hanover Grove the best Cooperative in Michigan.

Thank you for your cooperation.

MANAGEMENT

MANAGEMENT NEWS

110.13



Any member having a fountain, pond or pool on Cooperative property (permanent or temporary) must receive approval from the Cooperative and provide the Cooperative with a Certificate of Insurance covering liability limits as specified by the Cooperative. All such policies must have the Cooperative as an additional insured with a clause requiring the insurance carrier to give the Cooperative a 30-day notice of cancellation. Evidence of coverage shall be provided to the Cooperative annually. In addition, the member by acceptance of the Cooperative's approval indemnifies and holds the Cooperative harmless from any liability of whatsoever nature arising from or related to such approved item(s).

110.14

Swimming and/or wading pools that are not behind a locked fence must be empty when not in direct supervised use; and must be stored out of the way on lawn cutting days.



LAWN MOWING



ATTENTION ALL RESIDENTS!

In order for the lawn service to effectively mow the grass **ALL RESIDENTS MUST REMOVE** ANYTHING THAT HAS BEEN PLACED ON THE LAWN. There are too many toys, furniture and lawn ornaments. **LANDSCAPE SERVICES WILL NOT BE RESPONSIBLE FOR DAMAGE TO ANY ITEMS LEFT OUT!**

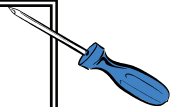


Please note: Inaccessible areas including those roped off will not be cut .



NEW MAINTENANCE WORK HOURS

IN ORDER TO BETTER SERVE THE RESIDENTS OF HANOVER GROVE COOPERATIVE, THE BOARD OF DIRECTORS AND MANAGEMENT HAVE DECIDED TO CHANGE THE MAINTENANCE HOURS FROM **8:00 AM TO 5:00 PM TO 8:30 AM TO 5:30 PM** EFFECTIVE MONDAY, JUNE 27, 2011



BALL PLAYING



A Friendly Reminder

Ball playing of ANY KIND, (this includes bouncing or throwing a ball on the way to the park), unless it is a Nerf ball, is prohibited within the Cooperative. This includes, but is not limited to: **BASEBALL, SOFTBALL, SOCCER, VOLLEYBALL, FRISBEE, FOOT BALL, TENNIS BALL**, etc.

Please refer to your "Rules and Regulations" in your Handbook Section 111 - Paragraph 111.4.



MANAGEMENT NEWS

EFFECTIVE IMMEDIATELY

Current statements for Social Security benefits for recertification cannot be over 120 days old. Be sure you contact the Social Security office for a current copy of your benefits when you receive your first recertification notice.

48 HOUR NOTICE IS

NECESSARY FOR:

Residency Letters

Shelter Verifications

Carrying Charge confirmations

Copies of anything in your file

We will not provide any of the above without a 48 hour notice.

THANK YOU

MANAGEMENT

CARRYING CHARGES

If you receive a “**PINK SLIP**” because your monthly carrying charge payment was not paid by the **10th of the month**, you **must pay the total amount due as noted on #1 on the “Pink Slip”**. This amount is due within **7 business days** of the date on the notice. If you make your money order out for any other amount, your payment **will not be accepted** and you risk being sent to the attorney and incurring additional fees.

Thank You



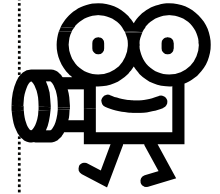
MEMBER NEWS



SENIOR MOVE NIGHT

NO MOVIE NIGHT IN AUGUST.

ENJOY YOUR SUMMER!
SEE YOU IN THE FALL.



Red/Pink Hats

No Red/Pink Hats in August.



SERVICE ANIMALS



Vaccinations must be renewed upon expiration and a copy of the immunization report must be turned into the office.

Please note ALL ABOUT ANIMALS WELLNESS CLINIC at 23451 Pinewood, Warren (586) 879-1745 only charges \$15.00 per vaccine. They are open Tuesday from 10 am to 6 pm, Wednesday and Thursday: 3 pm to 7 pm. You don't need an appointment; walk-ins welcome.

Visit www.allaboutanimalsrescue.org for more info.



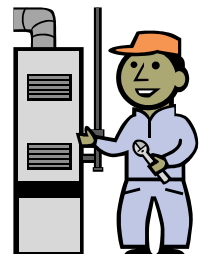
Hanover Grove's Utility Costs for June

Water \$25,583.19 Electric \$3,238.64 Gas \$10,487.62

% change from same month in 2010

Water +3% Electric +22% Gas -10%

Please help us reduce these costs by controlling usage and calling in work orders as needed. Thank you.





MEMBER NEWS



CHILDREN PLAYING

Please watch out for young children on skateboards and scooters riding out into the streets without looking to see if there are any cars coming.

Remember parked vans and SUV's create blind spots for cars driving down the streets and they may not stop in time if your child goes into the street without looking.

PARENTS PLEASE SPEAK TO YOUR CHILDREN ABOUT SAFETY.



A WARM WELCOME TO OUR NEWEST MEMBER

George Laiyos and family

Lana Williams and Gerald Sinclair

Mina Gendy and Youssef Younan

AIRSOFT GUNS

ARE NOT ALLOWED ON HANOVER PROPERTY

Airsoft guns can be dangerous and require proper protection. The projectile expelled from most airsoft guns on the market are capable of breaking skin and those with stronger projectiles could penetrate the skin. Blood can be drawn, but flesh is usually left intact or bruised at worst. Protective eyewear (goggles or glasses) is widely considered the minimum protection for airsoft players, as the eyes may be injured by any type of impact. A little known fact is that the teeth can also be injured (fractured) by the impact of a pellet. Dentists have reported broken teeth that require root canal and crowns to repair damage.



Parents—Please do not let your children play with airsoft guns of any type.

Thank you for your cooperation in this matter.

MEMBER NEWS

FOR YOUR INFORMATION

If you feel you may have bedbugs, please contact the office at 586-294-1910 immediately. If it is after hours, leave a message with the answering service and the on-call maintenance person will call you back and explain the proper procedure to follow. If possible, try to get a sample of the bug(s) and place it in a sealed baggie or container. The sample and the unit will be inspected by Eradico during normal business hours.

PLEASE DO NOT:

Throw away any furniture, clothing, bedding or any other items in the dumpster or on the garbage corners. This is important because it could infect someone else causing the situation to spread to other units, and possibly the clubhouse. There is a new heat treat system, whereby everything in your unit can be treated. Infected items need to be kept on quarantine until looked at by a professional.

If it is determined that there is bedbug activity in your unit, treatment will be scheduled as soon as possible after confirmation, since there is prep work that needs to be done by the resident.

Don't panic, there are many other types of bugs that are common in excessive heat or dampness but it is important that you let us know so that we can rule out a bed bug problem.

This type of insect is commonly found living in mattresses, sofas and cushion type areas.

Thank you for your cooperation in this matter.

MANAGEMENT

RECIPE PAGE

CRESCENT TACO BAKE



Prep time: 25 minutes
Total time: 50 minutes
Servings: 6

From Pillsbury.com/recipes

1 can (8 oz.) Pillsbury® refrigerated crescent dinner rolls
1 lb. lean ground beef
3/4 cup chunky salsa
2 Tbsp. taco seasoning mix (from 1-oz package)
1 cup shredded cheddar cheese (4 oz.)
Shredded lettuce as desired
Diced tomato, as desired

Heat oven to 375°F. Unroll dough; separate into 8 triangles. Place in ungreased 9-inch square pan or 10-inch pie plate; press over bottom and up sides to form crust.

In 10-inch skillet, cook beef over medium heat 8 to 10 minutes, stirring occasionally, until thoroughly cooked; drain. Stir in salsa and taco seasoning mix; simmer 5 minutes. Spoon meat mixture in crust-lined pan; sprinkle with cheese.

Bake 20 to 25 minutes or until crust is deep golden brown and cheese is melted. Serve topped with lettuce and tomato.

EASY GUACOMOLE



Prep time: 12 minutes
Servings: about 3/4 cup

From foodnetwork.com

1 ripe avocado, peeled and cut into 1/2-inch pieces
1 Tbsp. finely chopped yellow onion
1 clove garlic, minced
1 Tbsp. minced fresh cilantro leaves
2 tsp. fresh lime juice
1/8 tsp. salt

In a small mixing bowl, combine the avocado with the onion, garlic, cilantro, lime juice, and salt; mash with the back of a fork until mostly smooth.

Serve immediately, or cover with plastic wrap (pressed directly onto the surface of the guacamole) and refrigerate for up to 4 hours.

OREO SPLIT



Prep time: 5 minutes
Total Time: 2 minutes
Servings: 2

From kraftrecipes.com

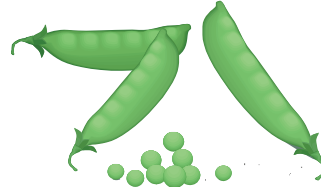
2 JELL-O chocolate pudding snacks
1 banana, cut lengthwise, then crosswise in half
1/4 cup thawed COOL WHIP whipped topping
1 OREO cookies, crumbled

SPOON pudding into 2 small bowls

INSERT bananas in pudding

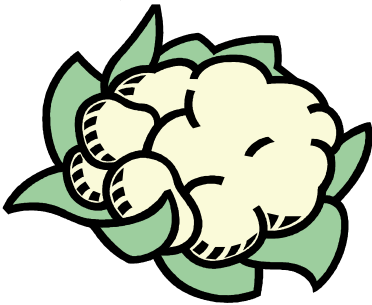
TOP with COOL WHIP and cookie crumbs. Serve Immediately.

WORD SEARCH



My Vegetable Garden

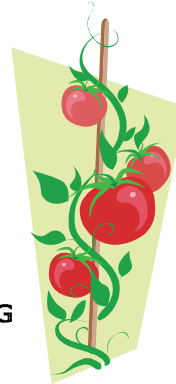
Y	R	E	L	E	C	L	O	V	R	G	P	H	A	Z	G	C	R
S	U	N	S	H	I	N	E	L	A	R	E	E	S	S	H	O	E
C	A	R	R	O	T	G	J	D	D	E	G	R	P	A	T	R	T
B	G	A	R	D	E	N	S	Q	I	E	G	G	I	P	U	N	A
L	U	F	I	T	N	U	O	B	S	N	P	N	R	P	E	Q	W
A	X	S	A	S	F	Z	E	L	H	H	L	I	O	S	E	R	S
I	U	B	A	U	A	E	S	W	M	O	A	T	T	K	Z	N	S
G	L	N	E	E	I	G	R	N	J	U	N	N	A	H	Y	D	C
E	T	U	O	R	P	S	A	T	A	S	T	A	M	A	H	R	A
I	L	O	C	C	O	R	B	B	I	E	B	L	O	R	T	A	B
O	R	G	A	N	I	C	A	T	A	L	B	P	T	V	L	Y	B
N	I	Z	G	N	I	N	N	A	C	T	I	N	T	E	A	K	A
C	A	U	L	I	F	L	O	W	E	R	U	Z	S	S	E	C	G
S	E	E	D	L	I	N	G	J	N	M	B	R	E	T	H	A	E
S	T	C	E	S	N	I	W	E	E	D	S	B	P	R	G	B	M



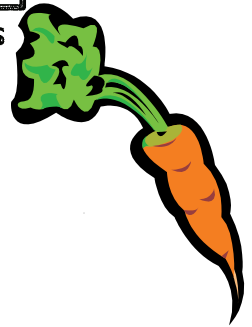
- BACKYARD
- BOUNTIFUL
- BROCCOLI
- CABBAGE
- CANNING
- CARROT
- CAULIFLOWER
- CELERY
- EGGPLANT
- FERTILIZER
- GARDEN



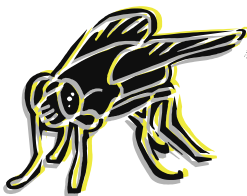
- GREENHOUSE
- HARVEST
- HEALTHY
- INSECTS
- ORGANIC
- PEAS
- PEPPERS
- PEST
- PLANTING
- RADISH
- RIPEN



- RUTABAGAS
- SEEDLING
- SOIL
- SPROUT
- SUNSHINE
- TOMATO
- VEGETABLE
- WATER
- WEEDS



To answer the trivia question, look for words that are hidden in the puzzle, but not in the word list above.



Trivia: The Iroquois Indians referred to these three common garden vegetables as the "Three Sisters." These three vegetables had deep spiritual meaning to the Iroquois.

Answers: _____, _____, and _____



HAPPY ADS



Tupperware
Wonderful New Catalog.
Great gift ideas.
Call Pat Kempf
586-293-1599

STURIANO FLOORS
Hardwood Perfectionist
Mike Sturiano
Sanding/Refinishing
(586) 943-6362

ROCKIN ROY'S DJ & KARAOKE



WEDDINGS, SHOWERS,
 BIRTHDAY PARTIES, GRADUATIONS,
 KID PARTIES OF ALL TYPES,
 CORPORATE PARTIES



Discounts for Roy Malone
 Hanover Residents 586-698-8764

For Sale

27 inch Panasonic TV - great condition - must sell Asking \$50.00 OBO

Set of 3 tables (2 end and 1 coffee table) Great Condition - like new !! All glass with chrome legs Asking \$75.00 OBO

Please call Nicole at 586-610-5665

2 year old Kenmore Elite washer & dryer. \$400 each. Top of the line from Sears. Call Marcella 586-214-5356

Wheelchair \$50.00; brand new Pulmoaide machine-in box \$50.00; Baby pool-new \$10.00; Walker \$10.00; Earrings pierced & clip \$1.00 each; Necklaces & Bracelets \$10.00-\$15.00; Angels \$10.00

Please call 586-216-7807

24" girls bike - like new \$50.00 - helmet and lock included

Call 415-1814

Coffee table-solid oak-part glass top/drawer below for displaying items. Excellent condition. Asking \$150

Jewelry box-solid oak, 38" w x 15d, 6 drawers, sides open for necklaces, top opens-mirror. Excellent condition. \$100

Call 586-415-8079, leave message if I am not at home

Services

LOOKING FOR A BABYSITTER?

I will baby-sit your child in my home. Hanover resident for over 30 years. Caring and Reliable. References on request. Please call Sandy at 586-218-8022.

AVON

Please call Julie at 296-0306 for a book or come by my house, 15618 Van Avenue

I was a nannie/babysitter for over 25 years, and would love to care for your child/children while you are away; in your home or mine.

Please call Rose if interested. 586-265-3865.

How to submit info for publication in each month's newsletter.

Must be submitted by the 20th of each month.

Submit what you want in writing to Dorothy's attention at the office or email her at: sales@hanovergrove.com

For detailed submissions, a written note will be required to ensure that the details are published correctly. Be sure to include your name and phone number in case there are any questions.



HALL RENTAL INFO

Having A Party?

Rent the Banquet Hall or Lounge



BANQUET HALL

Holds up to 100 people
(fewer if you need a dance
floor/room for a D.J.)

The Hall Includes:

Tables & Chairs

Commercial Stove

Refrigerator with Ice Maker

Beer Tapper (\$25.00) to rent
& Pitchers

Microwave/Dishwasher

Rental Fee: \$225.00

Security Deposit \$75.00

Total Due: \$300.00

LOUNGE

Holds up to 24 people

The Lounge Includes:

Tables & Chairs

Refrigerator with Ice Maker

Stove & Microwave

Rental Fees:

Rental Fee: \$50.00

Security Deposit: \$25.00

Total Due: \$75.00

**A \$50.00 deposit is due
when reservation is made,
and balance must be paid 30
days prior to event.**

Your Security Deposit will be returned if the building is clean and in good condition when you leave and no rental Rules have been violated.

You **MUST** be a member of Hanover Grove Cooperative to rent the Lounge and/or the Banquet Hall. And you **MUST** be in attendance for the full duration of the rental event. **NO EXCEPTIONS!**


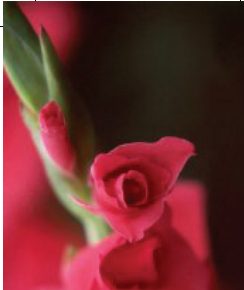
Contact: Hall Rental Office (586) 296-5464 or stop by at the following times:

Mondays: 5:00 pm to 7:30 pm

Saturdays: 10:00 am to 1:00 pm

AUGUST 2011



Sun	Mon	Tue	Wed	Thu	Fri	Sat
	1 TRASH PICK-UP	2	3	4	5 TRASH PICK-UP	6
7 TRASH & Recyclables OUT 6:00 pm	8 TRASH PICK-UP	9	10	11 TRASH OUT 6:00 pm	12 TRASH PICK-UP	13 FULL MOON
14 TRASH & Recyclables OUT 6:00 pm	15 TRASH PICK-UP 4th Fertilization	16	17	18 TRASH OUT 6:00 pm	19 TRASH PICK-UP MMAM INSPECTIONS	20 WOOD- WARD DREAM CRUISE
21 TRASH & Recyclables OUT 6:00 pm	22 TRASH PICK-UP	23	24	25 TRASH OUT 6:00 pm	26 TRASH PICK-UP	27
28 TRASH & Recyclables OUT 6:00 pm	29 TRASH PICK-UP	30	31			

Poppy

August Flowers

Gladiolus